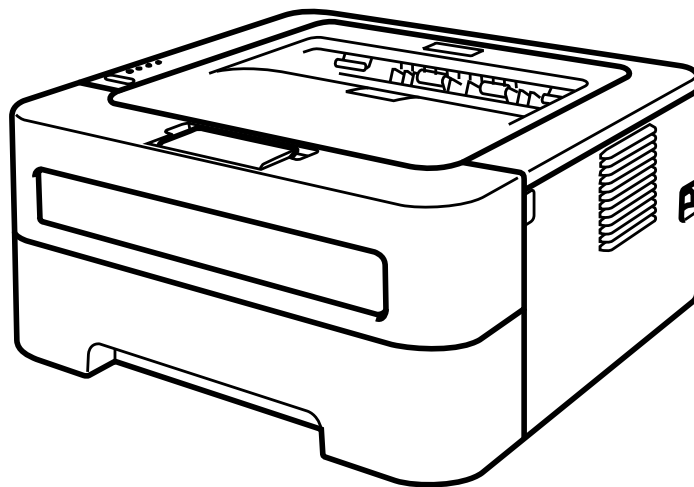




Laser Printer **PARTS REFERENCE LIST**

**MODEL:HL-2130/2132/2220/2230/
2240/2240D/2250DN/2270DW**



Read this list thoroughly before maintenance work.

Keep this list in a convenient place for quick and easy reference at all times.

NOTE FOR USING THIS PARTS REFERENCE LIST

1. In the case of ordering parts, it is necessary to mention the following items:

- (1) Code
- (2) Q'ty
- (3) Description
- (4) Symbol (PCB No. etc.)

<Example>

	(1)	(2)	(3)	(4)	
REF.NO.	CODE	Q'TY	DESCRIPTION	SYMBOL	REMARK

Revision No.: marked on the **main printed circuit board (Main PCB)**

B48K056

.....Circuit board No.

2. Design-changed parts:

If any of the parts is changed, one of the following symbols is indicated in the REMARK column.

CHG (chg): The part is changed for a new one.

ADD (add): The part is newly added.

DEL (del): The part is deleted.

Symbol in capital letters indicates the latest parts change information in the page.

3. The original parts reference list is based on the information available in July 2009.

4. Parts are subject to change in design without prior notice.

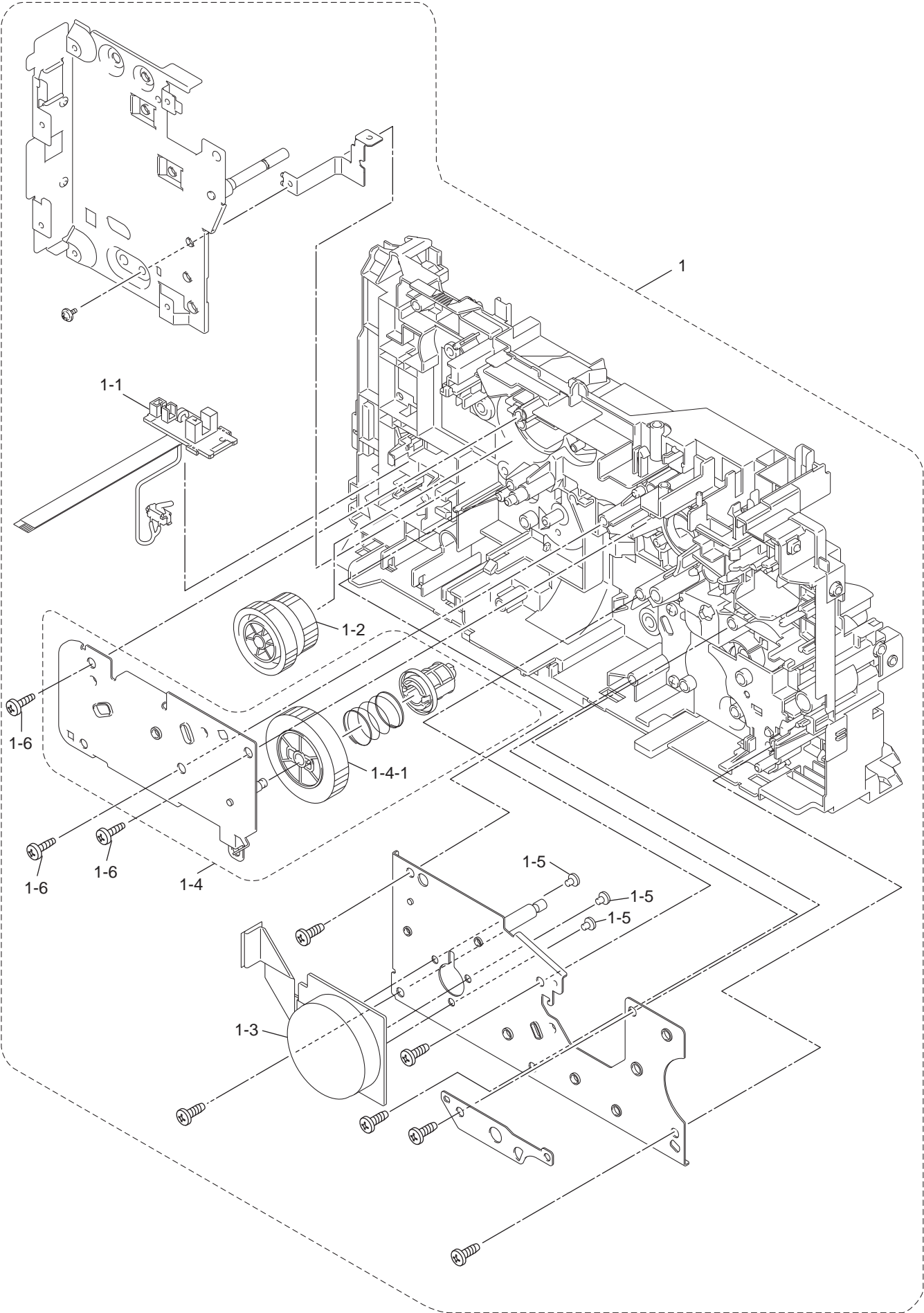
COUNTRIES AND AREAS

ARG: Argentina	ISR: Israel
ARL: Australia	ITA: Italy
BRA: Brazil	KOR: Korea
CAN: Canada	NZ: New Zealand
CEE: CEE-GENERAL	PHL: Philippines
(Bulgaria/Czech/Hungary/Poland/Romania/ Slovakia)	PND: PAN-NOR
CHE: Switzerland	(Norway/Finland/Denmark/Sweden)
CHL: Chile	POL: Poland
FRA/BEL/NLD: France/Belgium/Netherlands	RUS: Russia
GER: Germany	SGP: Singapore
IBR: Spain/Portugal	UK: U.K.
IND: India	US: U.S.A.

CONTENTS

1.	<u>FRAME L & DRIVE UNIT</u>	1
2.	<u>PAPER FEEDER</u>	3
3.	<u>FRAME</u>	5
4.	<u>LASER UNIT</u>	7
5.	<u>DX</u>	9
6.	<u>PAPER CASSETTE</u>	11
7.	<u>FUSER UNIT</u>	13
8.	<u>COVERS & LABELS</u>	15
9.	<u>MAIN PCB</u>	17
10.	<u>LVPS</u>	19
11.	<u>HVPS</u>	21
12.	<u>AC CORDS</u>	23
13.	<u>ACCESSORIES</u>	25
14.	<u>PACKING MATERIALS</u>	28
15.	<u>PERIODICAL MAINTENANCE</u>	30

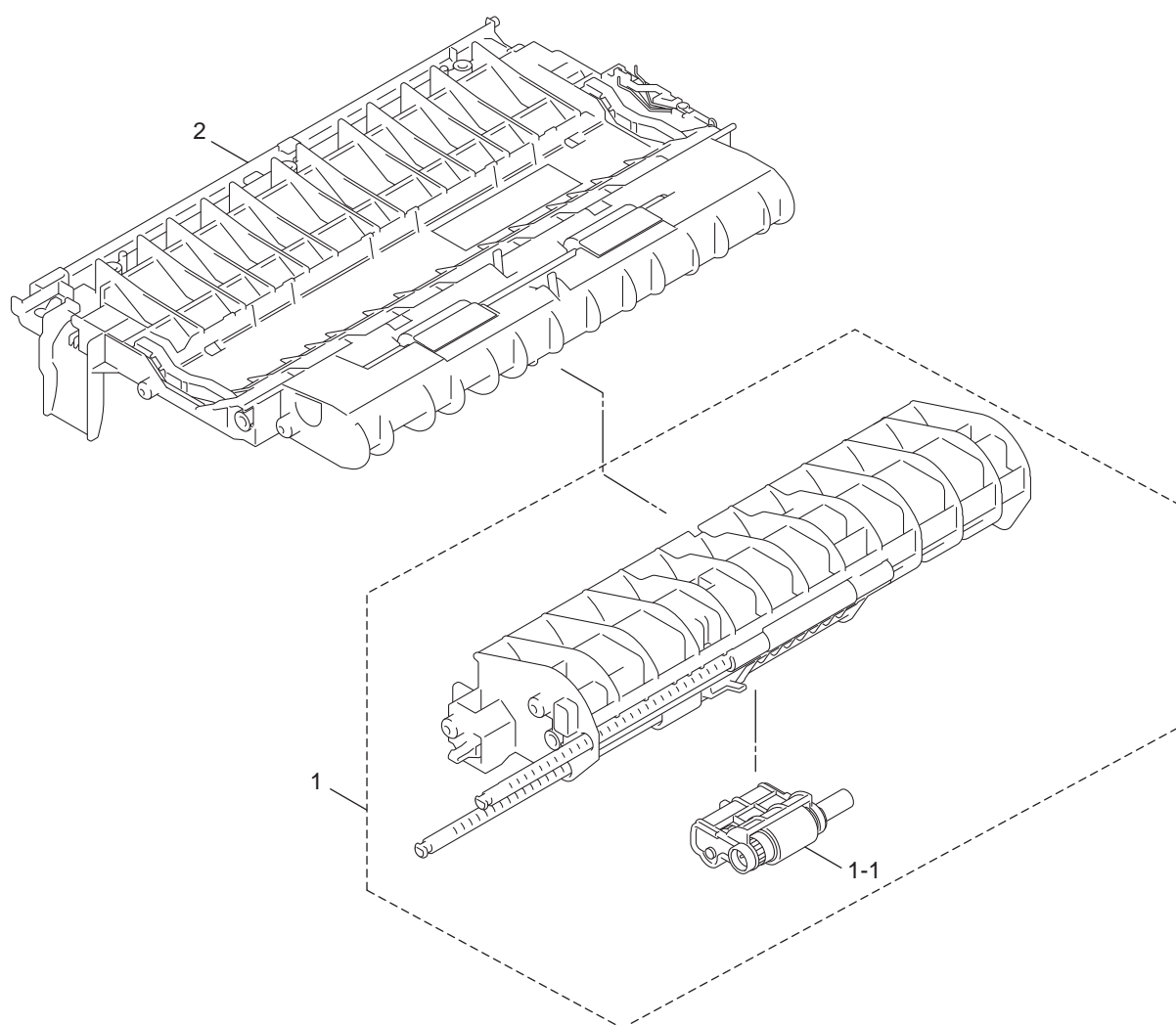
1. FRAME L & DRIVE UNIT



1. FRAME L & DRIVE UNIT

REF No.	CODE	Q'TY	DESCRIPTION	REMARKS
1	LY2290001	1	MAIN FRAME L ASSY, HL-2130/2132/2220/2230/2240	
1	LY2003001	1	MAIN FRAME L ASSY, HL-2240D	
1	LY2309001	1	MAIN FRAME L ASSY, HL-2250DN	
1	LY2448001	1	MAIN FRAME L ASSY, HL-2270DW	
1-1	LV0579001	1	PAPER EJECT SENSOR PCB ASSY	
1-2	LY2010001	1	FUSER GEAR 28/34	
1-3	LY2054001	1	MAIN MOTOR	
1-4	LY2067001	1	DEVELOP DRIVE SUB ASSY	
1-4-1	LY2070001	1	DEV GEAR JOINT/52	
1-5	000300416	3	SCREW BIND M3X4	
1-6	LU5693001	3	TAPTITE BIND B M4X12	

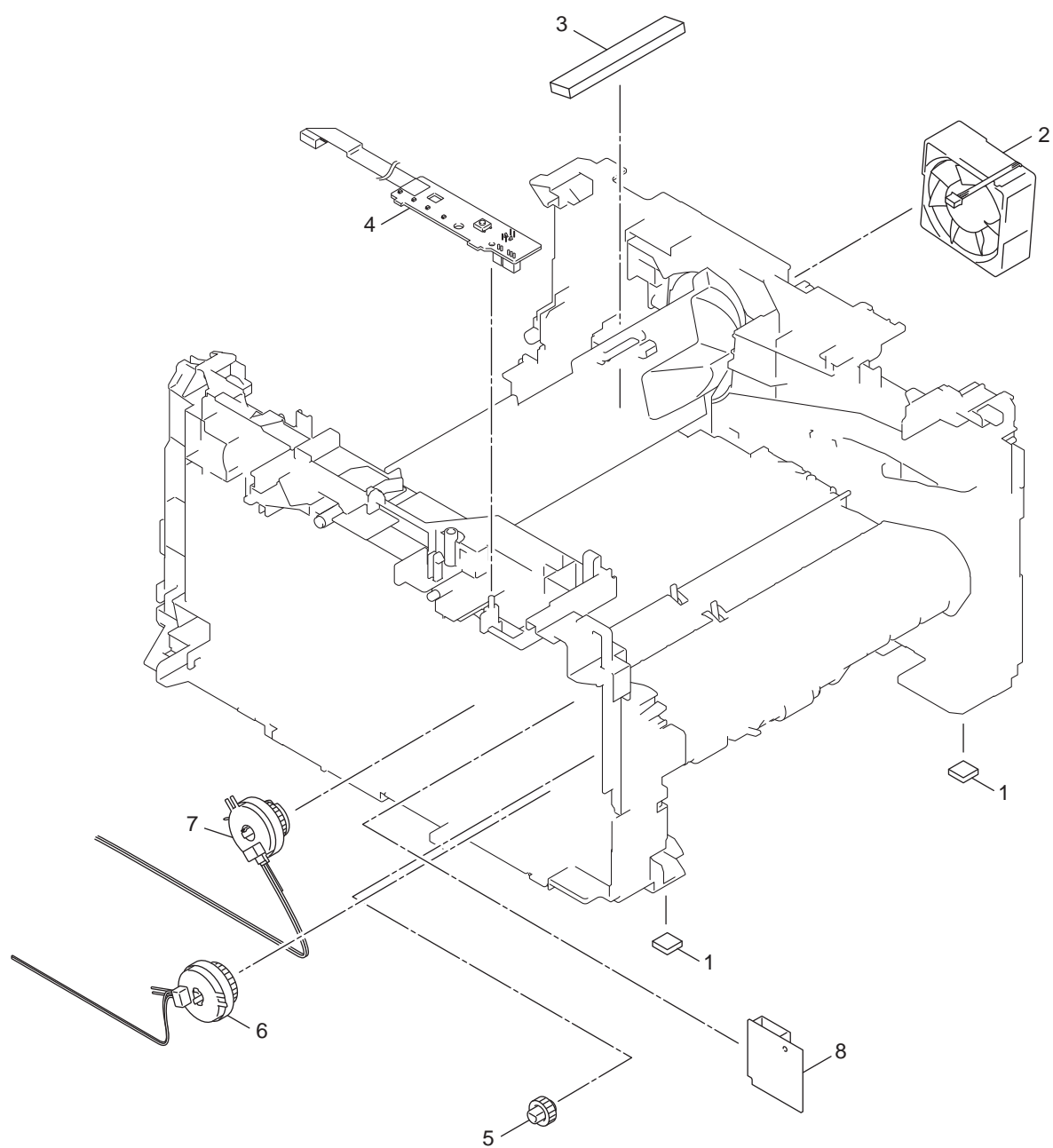
2. PAPER FEEDER



2. PAPER FEEDER

REF No.	CODE	Q'TY	DESCRIPTION	REMARKS
1	LY2087001	1	PF FRAME ASSY, HL-2130/2132/2220/2230/2240/2240D	
1	LY2312001	1	PF FRAME ASSY, HL-2250DN/2270DW	
1-1	LY2093001	1	PICK-UP ROLLER HOLDER ASSY	
2	LY2482001	1	REGIST FRAME ASSY, HL-2130/2132/2220/2230/2240	
2	LY2101001	1	REGIST FRAME ASSY, HL-2240D/2250DN/2270DW	

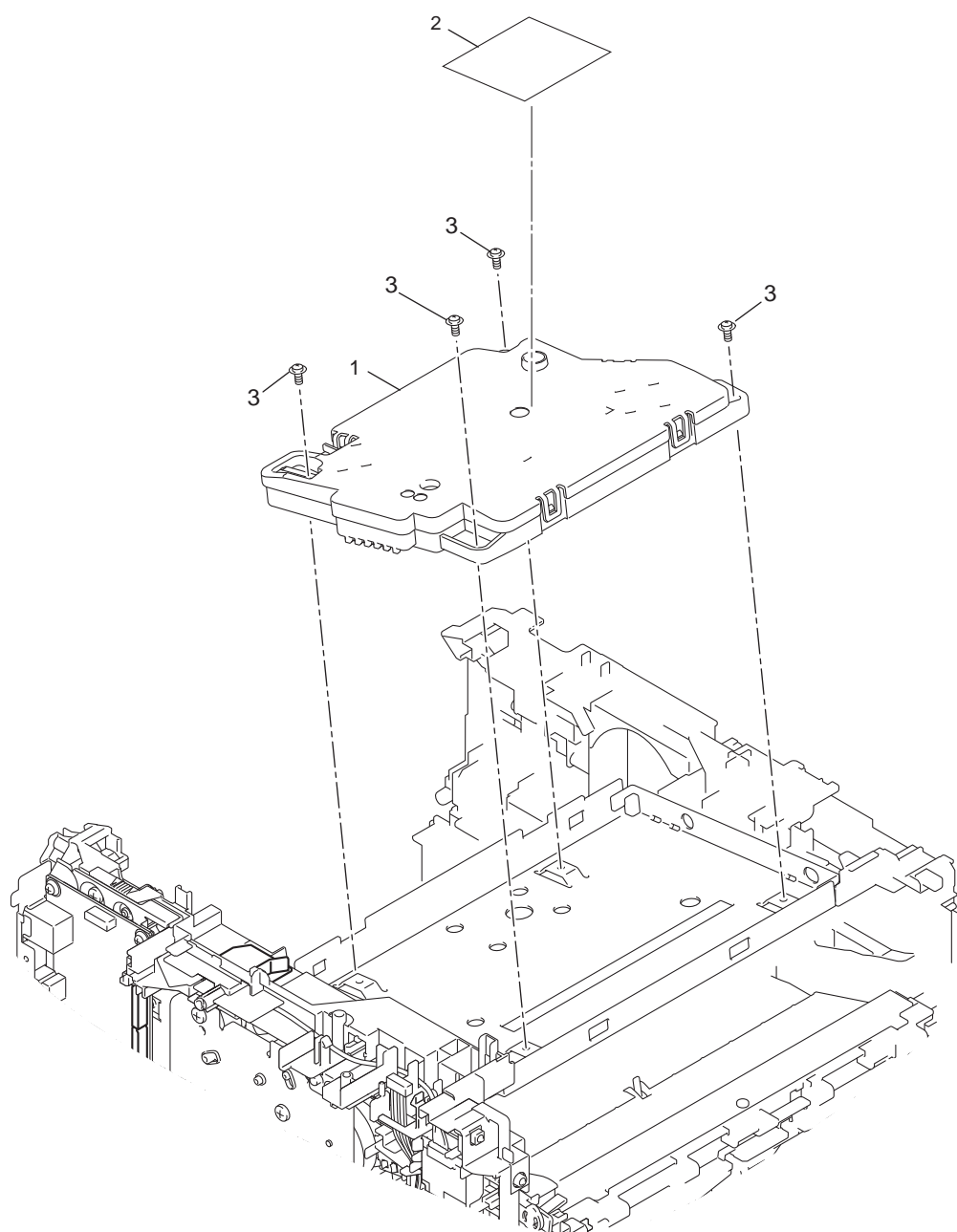
3. FRAME



3. FRAME

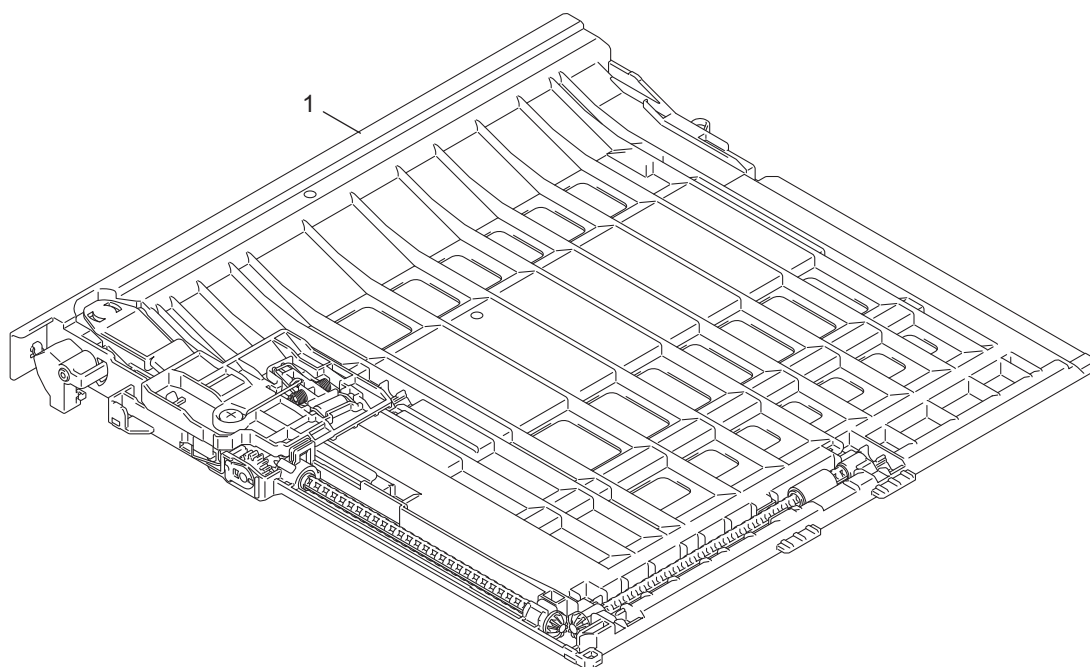
REF No.	CODE	Q'TY	DESCRIPTION	REMARKS
1	LJ7403001	2	RUBBER FOOT	
2	LY2136001	1	FAN MOTOR 60 ASSY	
3	LY2141001	1	FILTER	
4	LV0664001	1	PANEL PCB ASSY, HL-2130/2132/2220/2230/2240/2240D	
4	LV0580001	1	PANEL PCB ASSY, HL-2250DN/2270DW	
5	LY2584001	1	FEEDER GEAR 17	
6	LY2144001	1	T1 CLUTCH ASSY	
7	LY2150001	1	REG CLUTCH ASSY	
8	LT1401001	1	WIRELESS LAN PCB, HL-2270DW	

4. LASER UNIT



4. LASER UNIT

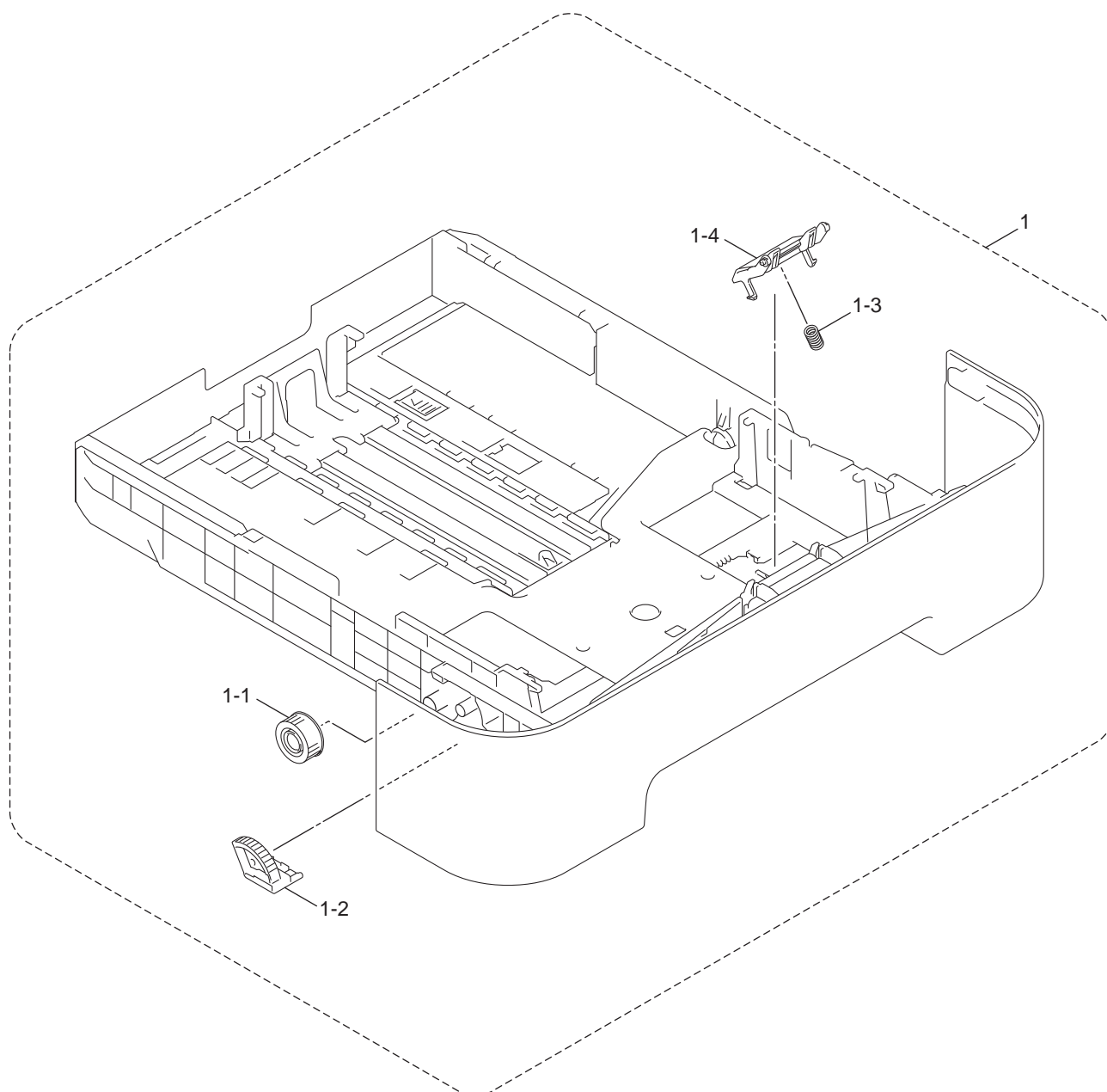
REF No.	CODE	Q'TY	DESCRIPTION	REMARKS
1	LY2566001	1	LASER UNIT (SP), HL-2130/2132/2220	CHG
1	LY2514001	1	LASER UNIT (SP), HL-2230/2240/2240D/2242D/2250DN/2270DW	
2	LU1259001	1	LABEL LASER CAUTION 75X100	
3	LP2378001	4	TAPTITE CUP S M3X8 SR	



5. DX

REF No.	CODE	Q'TY	DESCRIPTION	REMARKS
1	LY2166001	1	DUPLEX TRAY, HL-2240D/2270DW FOR US/CAN/PHL/ARG/CHL/BRA	
1	LY2452001	1	DUPLEX TRAY, HL-2240D/2250DN/2270DW EXCEPT FOR US/CAN/PHL/ARG/CHL/BRA	

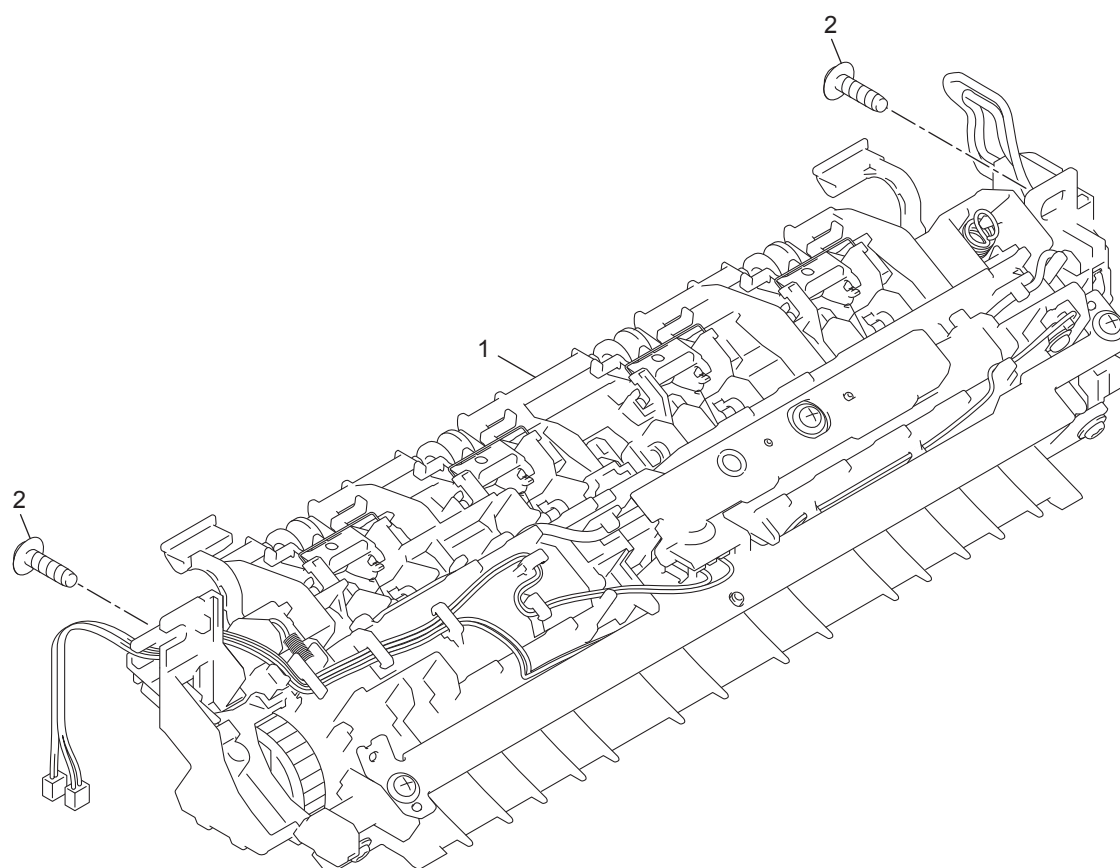
6. PAPER CASSETTE



6. PAPER CASSETTE

REF No.	CODE	Q'TY	DESCRIPTION	REMARKS
1	LY2567003	1	PAPER TRAY, HL-2130/2132 EXCEPT FOR IND	
1	LY2190003	1	PAPER TRAY, HL-2130/2220 FOR US/IND	
1	LY2190001	1	PAPER TRAY, HL-2230/2240/2240D/2250DN/2270DW FOR US/CAN/PHL/ARG/CHL/BRA/SGP	
1	LY2567001	1	PAPER TRAY, HL-2230/2240/2240D/2250DN/2270DW EXCEPT FOR US/CAN/PHL/ARG/CHL/BRA/SGP	
1-1	LR0252001	1	GEAR Z19M10	
1-2	LY2202001	1	LIFT GEAR 46	
1-3	LY2207001	1	SEPARATION PAD SPRING 2	
1-4	LY2208001	1	SEPARATION PAD ASSY	

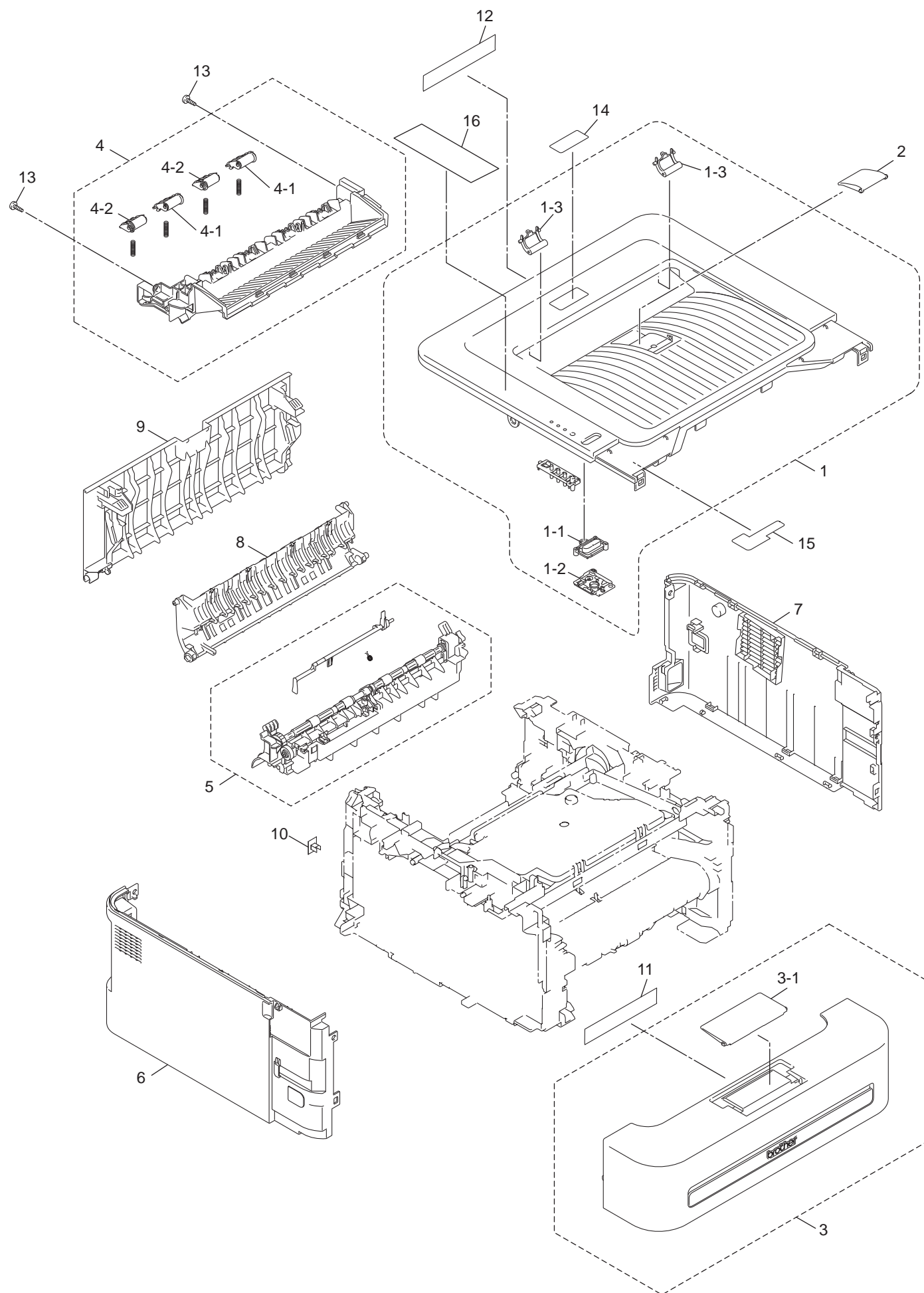
7. FUSER UNIT



7. FUSER UNIT

REF No.	CODE	Q'TY	DESCRIPTION	REMARKS
1	LY2487001	1	FUSER UNIT 115V (SP)	
1	LY2488001	1	FUSER UNIT 230V (SP)	
2	LJ0395001	2	TAPTITE PAN B M4X14	

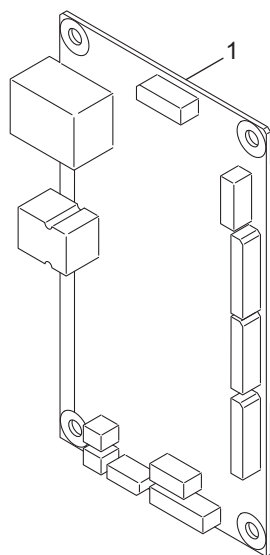
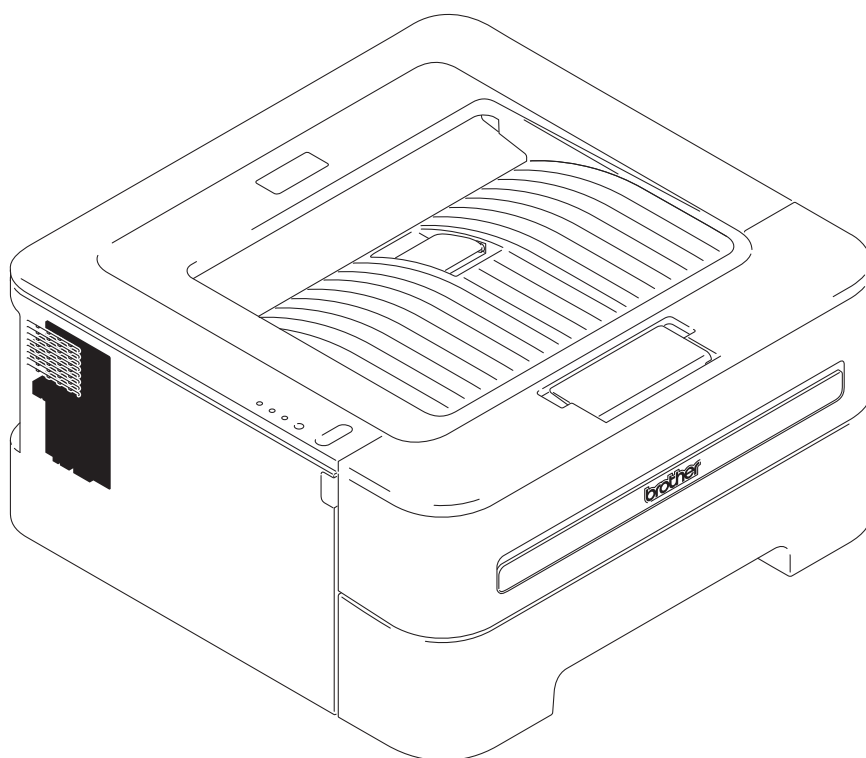
8. COVERS & LABELS



8. COVERS&LABELS

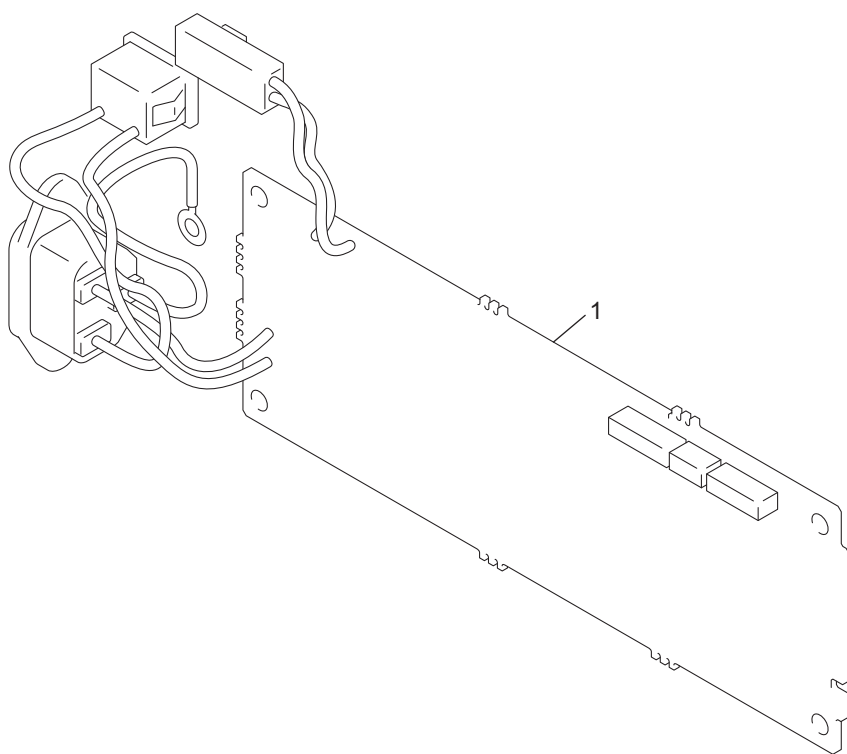
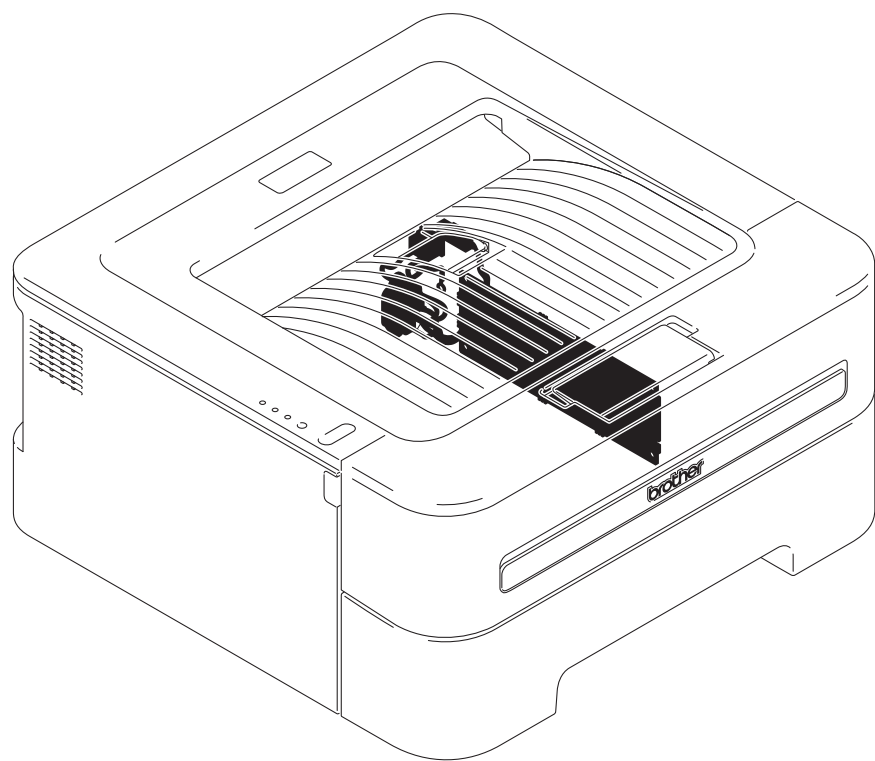
REF No.	CODE	Q'TY	DESCRIPTION	REMARKS
1	LY2301001	1	TOP COVER ASSY, HL-2130	
1	LY3029004	1	TOP COVER ASSY, HL-2132/2220	
1	LY3029003	1	TOP COVER ASSY, HL-2230	
1	LY3029001	1	TOP COVER ASSY, HL-2240	
1	LY2254001	1	TOP COVER ASSY, HL-2240D	
1	LY2254002	1	TOP COVER ASSY, HL-2250DN/2270DW	
1-1	LY2257003	1	SW KEY, HL-2130	
1-1	LY2455002	1	SW KEY, HL-2132/2220	
1-1	LY2455001	1	SW KEY, HL-2230/2240/2240D/2242D/2250DN/2270DW	
1-2	LY2304001	1	SW KEY HOLDER, HL-2130	
1-3	LY2262001	2	PAPER STACK LEVER, HL-2130/2132/2220/2230/2240	
1-3	LY3026001	2	PAPER STACK LEVER, HL-2240D/2250DN/2270DW	
2	LY2266003	1	SUPPORT FLAP 2, HL-2130/2230	
2	LY2266001	1	SUPPORT FLAP 2, HL-2132/2220/2240/2240D	
2	LY2266002	1	SUPPORT FLAP 2, HL-2250DN/2270DW	
3	LY2305001	1	FRONT COVER ASSY, HL-2130/2132 EXCEPT FOR IND	
3	LY3289001	1	FRONT COVER ASSY, HL-2130 FOR IND	
3	LY3082001	1	FRONT COVER ASSY, HL-2220	
3	LY2267001	1	FRONT COVER ASSY, HL-2230/2240/2240D/2250DN EXCEPT FOR PHL/SGP/KOR/RUS	
3	LY3164001	1	FRONT COVER ASSY, HL-2240/2240D/2250DN FOR RUS	
3	LY3162001	1	FRONT COVER ASSY, HL-2240D/2250DN FOR PHL/SGP/KOR	
3	LY2435001	1	FRONT COVER ASSY, HL-2270DW EXCEPT FOR PHL/SGP	
3	LY3160001	1	FRONT COVER ASSY, HL-2270DW FOR PHL/SGP	
3-1	LY2274003	1	SUPPORT FLAP 1, HL-2130/2132/2220	
3-1	LY2274001	1	SUPPORT FLAP 1, HL-2230/2240/2240D/2242D/2250DN/2270DW	
4	LY2275003	1	INNER CHUTE ASSY, HL-2130/2230	
4	LY2275001	1	INNER CHUTE ASSY, HL-2132/2220/2240/2240D	
4	LY2275002	1	INNER CHUTE ASSY, HL-2250DN/2270DW	
4-1	LU2234001	2	EJECT PINCH ROLLER R ASSY	
4-2	LU2237001	2	EJECT PINCH ROLLER L ASSY	
5	LY2317001	1	FUSER COVER	
6	LY2283003	1	SIDE COVER L, HL-2130/2132/2220	
6	LY2283001	1	SIDE COVER L, HL-2230/2240/2240D/2250DN/2270DW	
7	LY2284003	1	SIDE COVER R, HL-2130/2132/2220	
7	LY2284001	1	SIDE COVER R, HL-2230/2240/2240D/2250DN/2270DW	
8	LY2285001	1	OUTER CHUTE ASSY	
9	LY2529001	1	BACK COVER ASSY, HL-2130/2132/2220	
9	LY2529002	1	BACK COVER ASSY, HL-2230/2240	
9	LY2287001	1	BACK COVER, HL-2240D/2250DN/2270DW	
10	LY0872001	1	LAN PORT CAP, HL-2250DN/2270DW	
11	LY2713001	1	LABEL PROCESS OP US 19X135 FOR US/CAN/ARG/CHL/BRA	
11	LY2438001	1	LABEL PROCESS OP EUR 19X135 EXCEPT FOR US/CAN/ARG/CHL/BRA	
12	LY2439001	1	LABEL H CAUTION REAR 13X95	
13	LU5693001	2	TAPTITE BIND B M4X12	
14	LY2523001	1	MODEL PLATE, HL-2130	
14	LY3381001	1	MODEL PLATE, HL-2132	
14	LY2908001	1	MODEL PLATE, HL-2220	
14	LY2562001	1	MODEL PLATE, HL-2230	
14	LY2689001	1	MODEL PLATE, HL-2240 EXCEPT FOR RUS	
14	LY3173001	1	MODEL PLATE, HL-2240 FOR RUS	
14	LY2436001	1	MODEL PLATE, HL-2240D EXCEPT FOR RUS	
14	LY3172001	1	MODEL PLATE, HL-2240D FOR RUS	
14	LY2522001	1	MODEL PLATE, HL-2250DN EXCEPT FOR RUS	
14	LY3174001	1	MODEL PLATE, HL-2250DN FOR RUS	
14	LY2437001	1	MODEL PLATE, HL-2270DW	
15	LY2518001	1	LABEL TOP COVER FRONT	ADD
16	LY2723001	1	LED LABEL FOR US	ADD

9. MAIN PCB



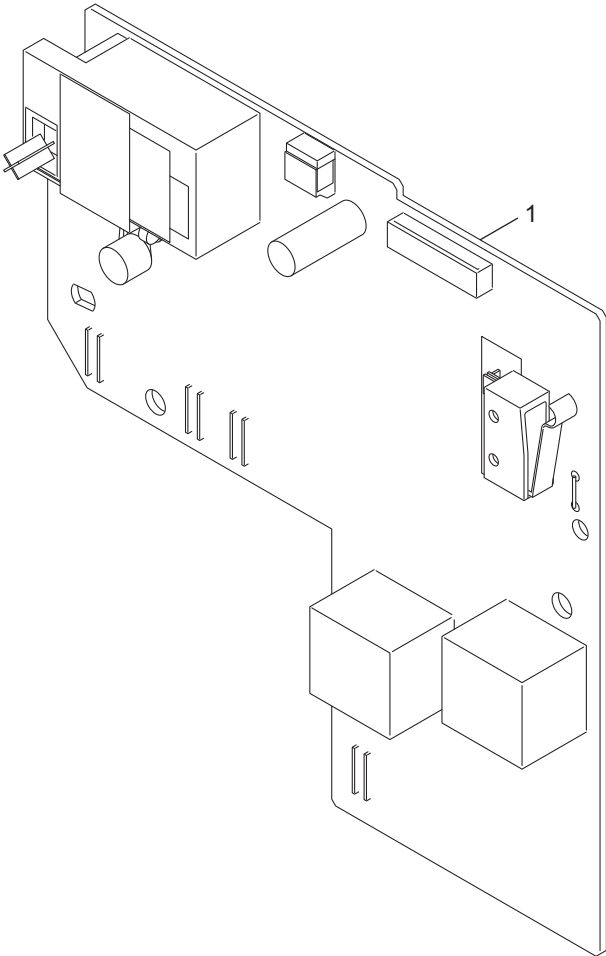
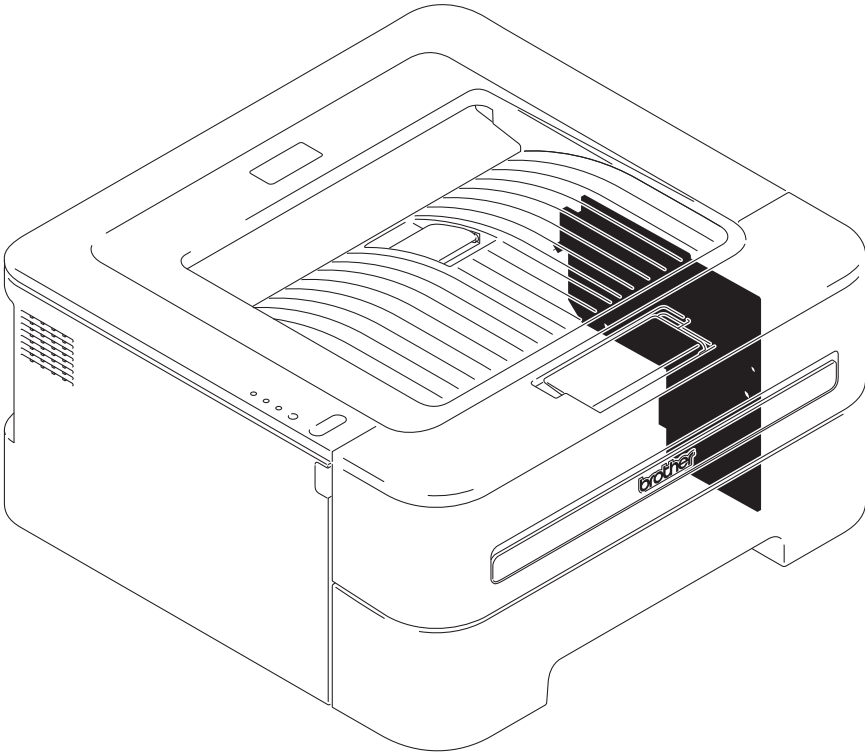
9. MAIN PCB

REF No.	CODE	Q'TY	DESCRIPTION	SYMBOL	REMARKS
1	LV0608001	1	MAIN PCB ASSY, HL-2130/2132 EXCEPT FOR IND	B512309	
1	LV0727001	1	MAIN PCB ASSY, HL-2130 FOR IND	B512309	
1	LV0669001	1	MAIN PCB ASSY, HL-2220	B512309	
1	LV0675001	1	MAIN PCB ASSY, HL-2230	B512309	
1	LV0662001	1	MAIN PCB ASSY, HL-2240	B512309	
1	LV0561001	1	MAIN PCB ASSY, HL-2240D	B512309	
1	LV0567001	1	MAIN PCB ASSY, HL-2250DN	B512314	
1	LV0560001	1	MAIN PCB ASSY, HL-2270DW FOR US/CAN/BRA	B512314	
1	LV0560002	1	MAIN PCB ASSY, HL-2270DW EXCEPT FOR US/CAN/BRA	B512314	



10. LVPS

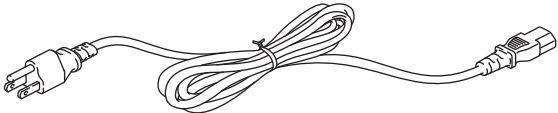



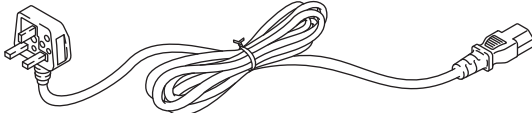


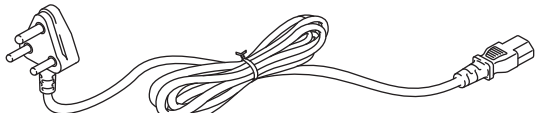
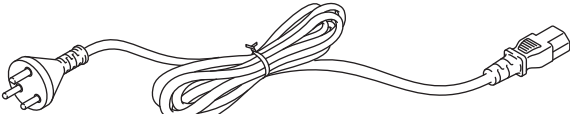
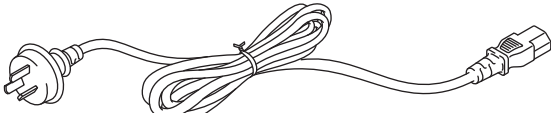
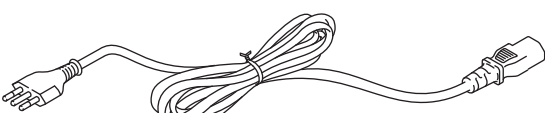

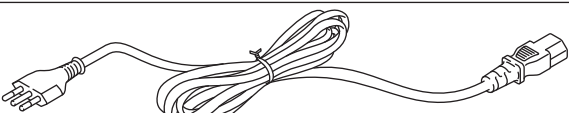
REF No.	CODE	Q'TY	DESCRIPTION	REMARKS
1	LV0583001	1	LOW VOLTAGE POWER SUPPLY PCB ASSY 115V	
1	LV0584001	1	LOW VOLTAGE POWER SUPPLY PCB ASSY 230V EXCEPT FOR IND/RUS	
1	LV0630001	1	LOW VOLTAGE POWER SUPPLY PCB ASSY 230V FOR IND/RUS	



11. HVPS

REF No.	CODE	Q'TY	DESCRIPTION	REMARKS
1	LV0564001	1	HIGHT VOLTAGE POWER SUPPLY PCB ASSY	

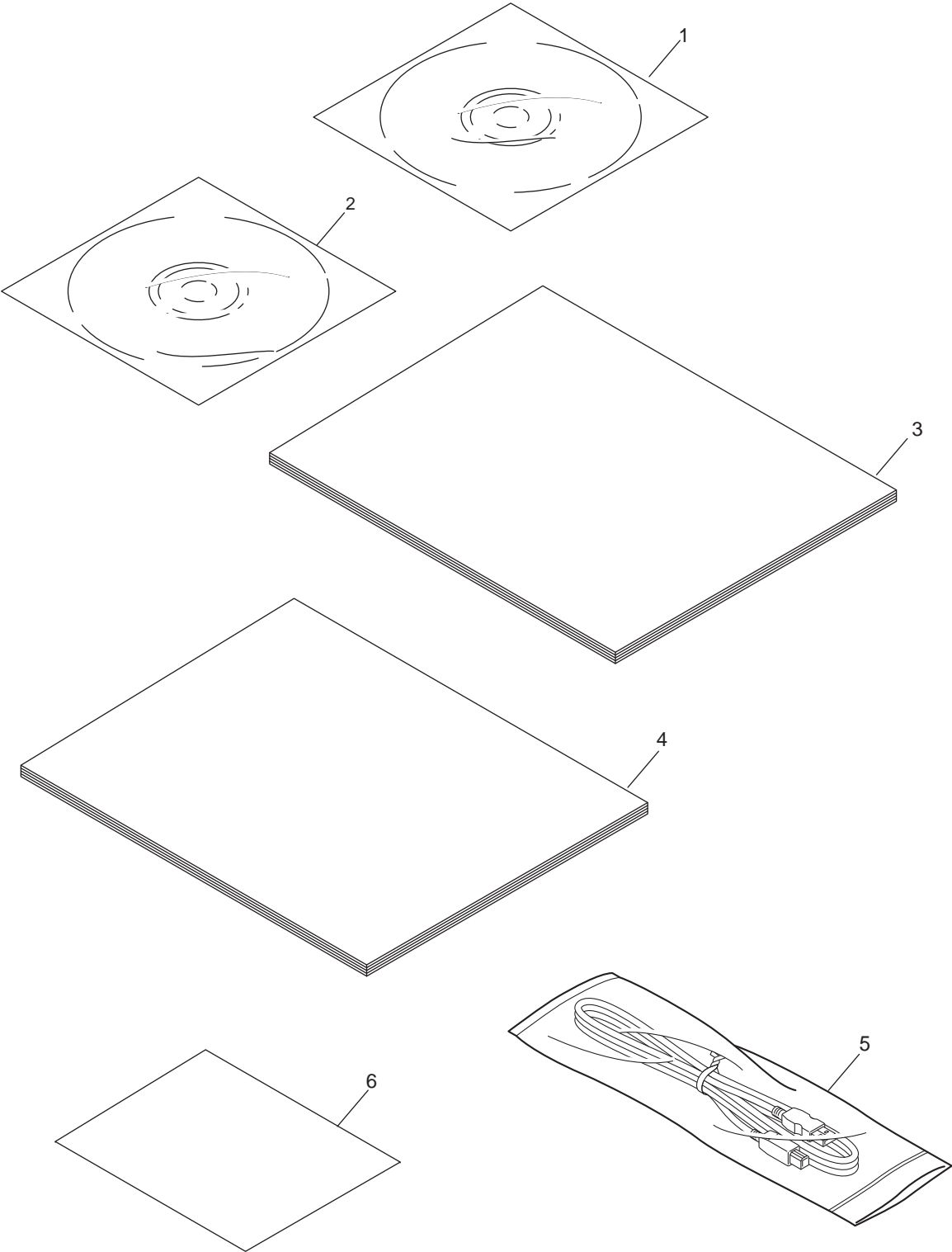
12. AC CORDS

1		10	
2		11	
3		12	
4		13	
5			
6			
7			
8			
9			

12. AC CORD

REF No.	CODE	Q'TY	DESCRIPTION	REMARKS
1	LJ9271001	1	AC CORD ASSY LF UL/CSA 10A	ADD
2	LV0363001	1	AC CORD ASSY LF VDE S	
3	LV0367001	1	AC CORD ASSY LF BS/PSB S	
4	LJ9254001	1	AC CORD ASSY LF SEV	
5	LJ9256001	1	AC CORD ASSY LF DEMKO	
6	LV0377001	1	AC CORD ASSY LF IRAM	
7	LJ9294001	1	AC CORD ASSY LF CHILE	
8	LV0388001	1	AC CORD BAG ASSY LF PERU	
9	LT0913001	1	AC CORD ASSY LF BRZ N	
10	LV0392001	1	AC CORD ASSY LF KOR S	
11	LV0365001	1	AC CORD LF SAA S	
12	LM9288001	1	AC CORD ASSY LF ISRAEL	
13	LV0213001	1	AC CORD ASSY LF IND	

13. ACCESSORIES



13. ACCESSORIES

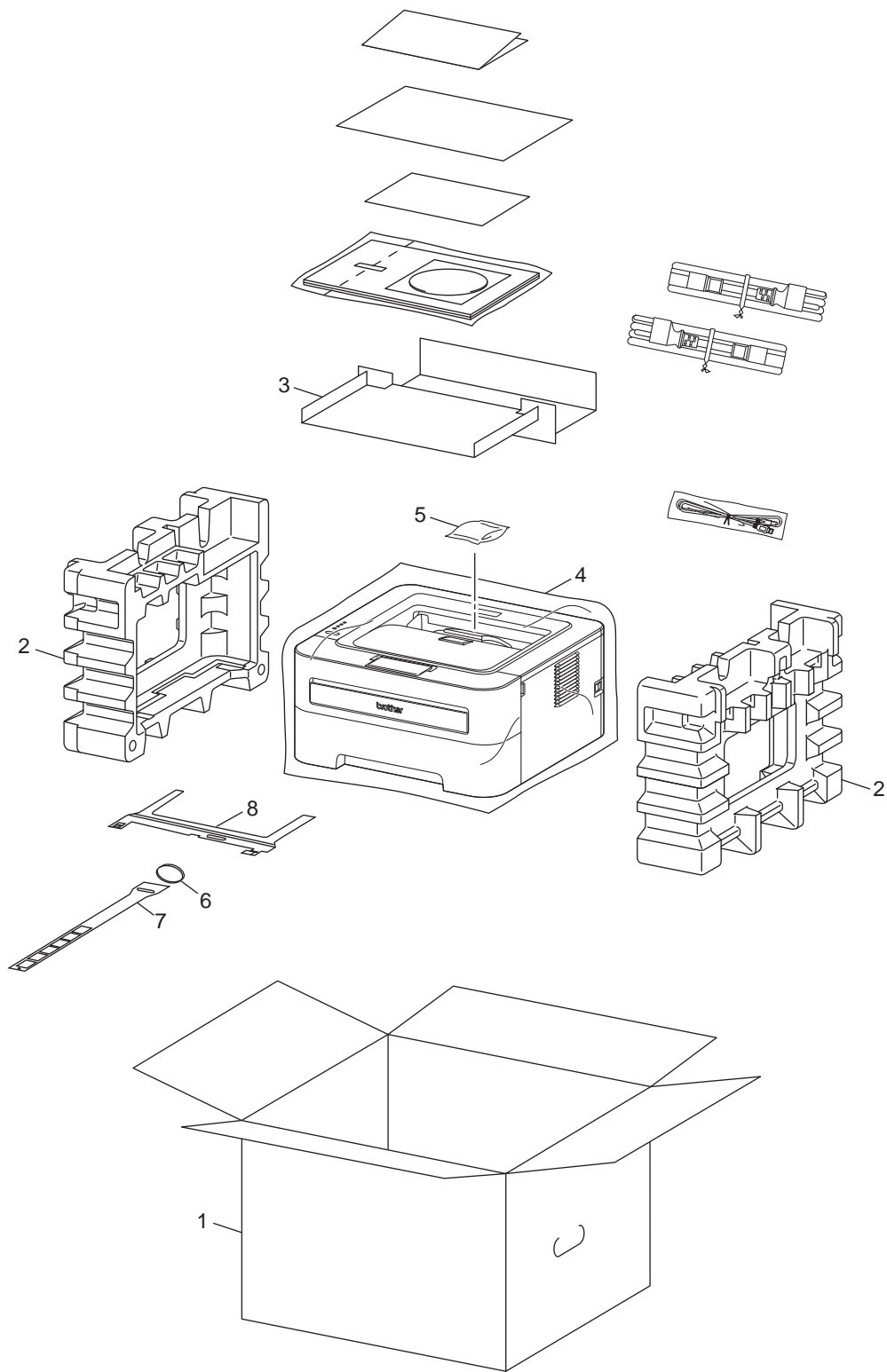
REF No.	CODE	Q'TY	DESCRIPTION	REMARKS
1	LY2949001	1	CDROM ASSY, HL-2130/2132/2220	
1	LY3121001	1	CDROM ASSY, HL-2230/2240/2240D/2242D/2250DN/2270DW EXCEPT FOR ISR/POL/KOR/RUS/CEE	CHG
1	LY2702001	1	CDROM ASSY, HL-2240/2240D/2250DN/2270DW FOR ISR/POL/RUS/CEE	
1	LY2705001	1	CDROM ASSY FOR KOR	
2	LY2690001	4	CD USER'S GUIDE, HL-2230/2240/2240D FOR US	DEL
2	LY2692001	4	CD USER'S GUIDE, HL-2240/2240D/2250DN EXCEPT FOR US, HL-2270DW EXCEPT FOR US/CAN	DEL
3	LY3326001	1	SAFETY/LEGAL BOOKLET, HL-2220 FOR US	
3	LY2739001	1	SAFETY/LEGAL BOOKLET, HL-2230/2240/2240D/2270DW FOR US/CAN (ENGLISH)	
3	LY2740001	1	SAFETY/LEGAL BOOKLET, HL-2230/2240/2240D/2270DW FOR CAN (FRENCH)	
3	LY3318001	1	SAFETY/LEGAL BOOKLET, HL-2130 FOR GER/CHE (GERMAN)	
3	LY2778001	1	SAFETY/LEGAL BOOKLET, HL-2240/2240D/2250DN/2270DW FOR GER/CHE (GERMAN)	
3	LY3319001	1	SAFETY/LEGAL BOOKLET, HL-2130/2132 FOR UK	
3	LY2777001	1	SAFETY/LEGAL BOOKLET, HL-2240/2240D/2250DN/2270DW FOR UK/ISR	
3	LY2771001	1	SAFETY/LEGAL BOOKLET FOR ARL/NZ/PHL/SGP	
3	LY3321001	1	SAFETY/LEGAL BOOKLET, HL-2130 FOR CHE/FRA/BEL/NLD (FRENCH)	
3	LY2779001	1	SAFETY/LEGAL BOOKLET, HL-2240/2240D/2250DN/2270DW FOR CHE/FRA/BEL/NLD (FRENCH)	
3	LY3322001	1	SAFETY/LEGAL BOOKLET, HL-2130 FOR ITA	
3	LY2780001	1	SAFETY/LEGAL BOOKLET, HL-2240D/2250DN/2270DW FOR ITA	
3	LY2781001	1	SAFETY/LEGAL BOOKLET, HL-2240/2240D/2250DN/2270DW FOR ARG/CHL/IBR (SPANISH)	
3	LY2741001	1	SAFETY/LEGAL BOOKLET FOR BRA	
3	LY2773001	1	SAFETY/LEGAL BOOKLET FOR KOR	
3	LY3320001	1	SAFETY/LEGAL BOOKLET FOR IND	
3	LY2785001	1	SAFETY/LEGAL BOOKLET FOR RUS	
3	LY3335001	1	SAFETY/LEGAL BOOKLET, HL-2130 FOR FRA/BEL/NLD (DUTCH)	
3	LY2783001	1	SAFETY/LEGAL BOOKLET, HL-2240/2240D/2250DN/2270DW FOR FRA/BEL/NLD (DUTCH)	
3	LY3324001	1	SAFETY/LEGAL BOOKLET, HL-2130/2132 FOR PND	
3	LY2784001	1	SAFETY/LEGAL BOOKLET, HL-2240/2240D/2250DN/2270DW FOR PND	
3	LY3325001	1	SAFETY/LEGAL BOOKLET, HL-2130 FOR IBR (SPANISH)	
3	LY3336001	1	SAFETY/LEGAL BOOKLET, HL-2130 FOR IBR (PORTUGUESE)	
3	LY2782001	1	SAFETY/LEGAL BOOKLET, HL-2240/2240D/2250DN/2270DW FOR IBR (PORTUGUESE)	
3	LY2786001	1	SAFETY/LEGAL BOOKLET FOR POL/CEE	
4	LY3316001	1	SETUP GUIDE, HL-2130/2132/2220 FOR US/UK/IND (ENGLISH)	
4	LY3123001	1	SETUP GUIDE, HL-2230/2240/2240D/2250DN FOR US/CAN/UK/ARL/NZ/ISR/PHL/SGP/CEE (ENGLISH)	CHG
4	LY3124001	1	SETUP GUIDE, HL-2270DW FOR US/CAN/UK/ARL/NZ/PHL/SGP (ENGLISH)	
4	LY3125001	1	SETUP GUIDE, HL-2230/2240/2240D FOR CAN (FRENCH)	
4	LY3126001	1	SETUP GUIDE, HL-2270DW FOR CAN (FRENCH)	
4	LY3315001	1	SETUP GUIDE, HL-2130 FOR GER/CHE (GERMAN)	
4	LY3127001	1	SETUP GUIDE, HL-2240/2240D/2250DN FOR GER/CHE (GERMAN)	CHG
4	LY3128001	1	SETUP GUIDE, HL-2270DW FOR GER/CHE (GERMAN)	
4	LY3327001	1	SETUP GUIDE, HL-2130 FOR CHE/FRA/BEL/NLD (FRENCH)	
4	LY3129001	1	SETUP GUIDE, HL-2240/2240D/2250DN FOR CHE/FRA/BEL/NLD (FRENCH)	CHG
4	LY3130001	1	SETUP GUIDE, HL-2270DW FOR CHE/FRA/BEL/NLD (FRENCH)	
4	LY3328001	1	SETUP GUIDE, HL-2130 FOR ITA	
4	LY3131001	1	SETUP GUIDE, HL-2240D/2250DN FOR ITA	CHG
4	LY3132001	1	SETUP GUIDE, HL-2270DW FOR ITA	
4	LY3133001	1	SETUP GUIDE, HL-2240/2240D/2250DN FOR ARG/CHL/IBR (SPANISH)	CHG
4	LY3134001	1	SETUP GUIDE, HL-2270DW FOR ARG/CHL/IBR (SPANISH)	
4	LY2770001	1	SETUP GUIDE, HL-2270DW FOR POL	
4	LY2737001	1	SETUP GUIDE, HL-2240 FOR BRA	
4	LY2738001	1	SETUP GUIDE, HL-2270DW FOR BRA	
4	LY2788001	1	SETUP GUIDE, HL-2240D/2250DN FOR KOR	
4	LY2762001	1	SETUP GUIDE, HL-2240/2240D/2250DN FOR RUS	
4	LY3329001	1	SETUP GUIDE, HL-2130 FOR FRA/BEL/NLD (DUTCH)	
4	LY3137001	1	SETUP GUIDE, HL-2240/2240D/2250DN FOR FRA/BEL/NLD (DUTCH)	CHG

HL-2130/2132/2220/2230/2240/
2240D/2250DN/2270DW

13. ACCESSORIES

REF No.	CODE	Q'TY	DESCRIPTION	REMARKS
4	LY3138001	1	SETUP GUIDE, HL-2270DW FOR FRA/BEL/NLD (DUTCH)	
4	LY3330001	1	SETUP GUIDE, HL-2130/2132 FOR PND (NORWEGIAN)	
4	LY3143001	1	SETUP GUIDE, HL-2240/2240D/2250DN FOR PND (NORWEGIAN)	CHG
4	LY3144001	1	SETUP GUIDE, HL-2270DW FOR PND (NORWEGIAN)	
4	LY3331001	1	SETUP GUIDE, HL-2130/2132 FOR PND (SWEDISH)	
4	LY3146001	1	SETUP GUIDE, HL-2240/2240D/2250DN FOR PND (SWEDISH)	CHG
4	LY3145001	1	SETUP GUIDE, HL-2270DW FOR PND (SWEDISH)	
4	LY3332001	1	SETUP GUIDE, HL-2130/2132 FOR PND (FINNISH)	
4	LY3139001	1	SETUP GUIDE, HL-2240/2240D/2250DN FOR PND (FINNISH)	CHG
4	LY3140001	1	SETUP GUIDE, HL-2270DW FOR PND (FINNISH)	
4	LY3333001	1	SETUP GUIDE, HL-2130/2132 FOR PND (DANISH)	
4	LY3141001	1	SETUP GUIDE, HL-2240/2240D/2250DN FOR PND (DANISH)	CHG
4	LY3142001	1	SETUP GUIDE, HL-2270DW FOR PND (DANISH)	
4	LY3317001	1	SETUP GUIDE, HL-2130 FOR IBR (SPANISH)	
4	LY3334001	1	SETUP GUIDE, HL-2130 FOR IBR (PORTUGUESE)	
4	LY3135001	1	SETUP GUIDE, HL-2240/2240D/2250DN FOR IBR (PORTUGUESE)	CHG
4	LY3136001	1	SETUP GUIDE, HL-2270DW FOR IBR (PORTUGUESE)	
4	LY2763001	1	SETUP GUIDE, HL-2240/2240D/2250DN FOR CEE (ROMANIAN/SLOVAK)	
4	LY2764001	1	SETUP GUIDE, HL-2240/2240D/2250DN FOR CEE (POLISH/BULGARIAN)	
4	LY2765001	1	SETUP GUIDE, HL-2240/2240D/2250DN FOR CEE (CZECH/HUNGARIAN)	
5	LJ9803001	1	USB CABLE 2.0	
6	LY3027001	1	FRENCH PANEL STICKER FOR CAN	

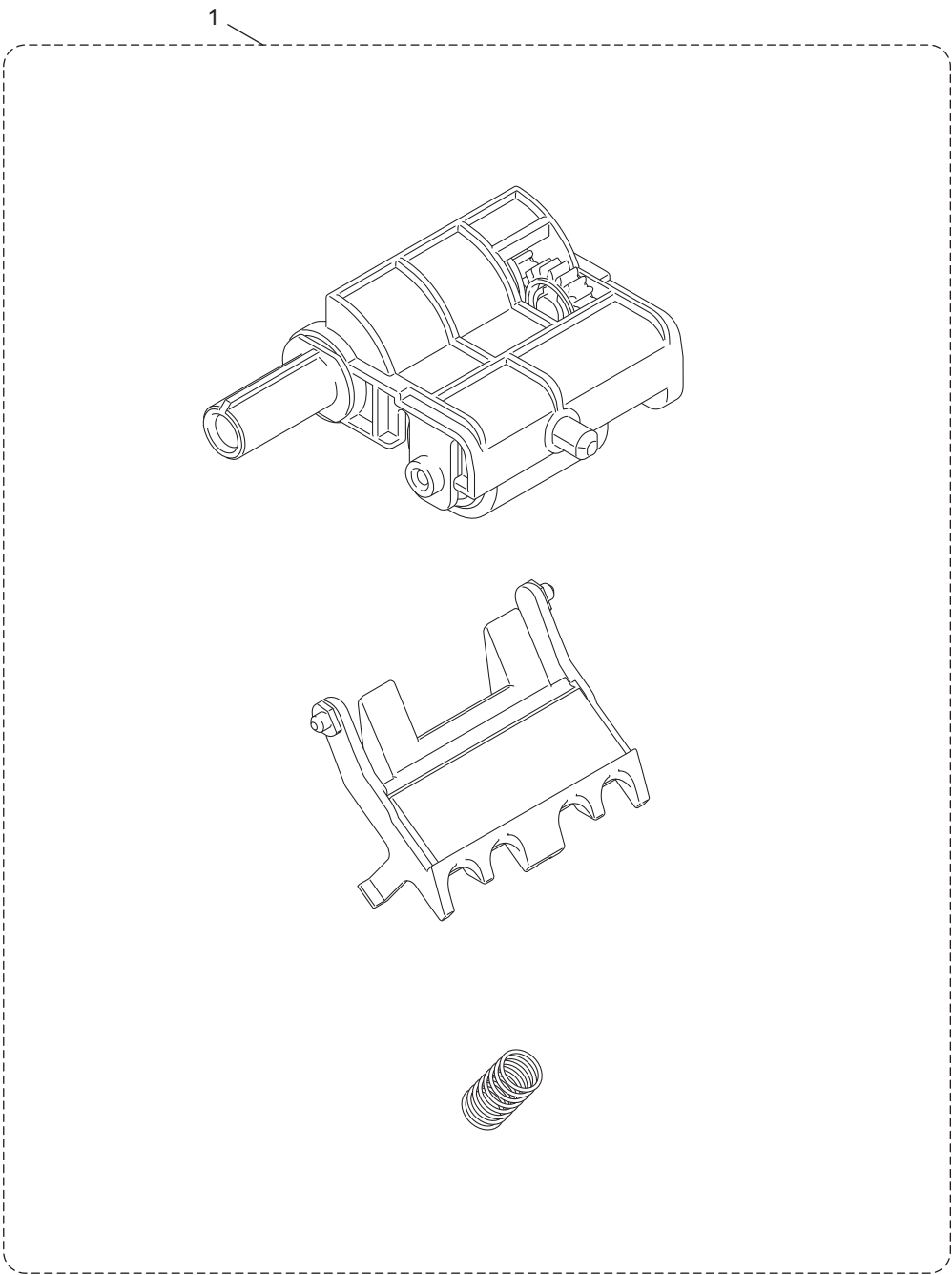
14. PACKING MATERIALS



14. PACKING MATERIALS

REF No.	CODE	Q'TY	DESCRIPTION	REMARKS
1	LY2801001	1	CARTON, HL-2220 FOR US	
1	LY2803001	1	CARTON, HL-2230 FOR US	
1	LY2811001	1	CARTON, HL-2240 FOR US	
1	LY2807001	1	CARTON, HL-2240D FOR US	
1	LY2817001	1	CARTON, HL-2270DW FOR US	
1	LY2806001	1	CARTON, HL-2230 FOR CAN	
1	LY2814001	1	CARTON, HL-2240 FOR CAN	
1	LY2810001	1	CARTON, HL-2240D FOR CAN	
1	LY2820001	1	CARTON, HL-2270DW FOR CAN	
1	LY2825001	1	CARTON, HL-2130 FOR GER/CHE	
1	LY2835001	1	CARTON, HL-2240 FOR GER/CHE	
1	LY2843001	1	CARTON, HL-2240D FOR GER/CHE	
1	LY2851001	1	CARTON, HL-2250DN FOR GER/CHE	
1	LY2857001	1	CARTON, HL-2270DW FOR GER/UK/CHE/ITA/IBR/POL/FRA/BEL/NLD/PND	
1	LY2823001	1	CARTON, HL-2130 FOR UK/PND	
1	LY2831001	1	CARTON, HL-2132 FOR UK	
1	LY2833001	1	CARTON, HL-2240 FOR UK/ISR/PND/CEE	
1	LY2841001	1	CARTON, HL-2240D FOR UK/ISR/PND/CEE	
1	LY2849001	1	CARTON, HL-2250DN FOR UK/ISR/PND/CEE	
1	LY3032001	1	CARTON, HL-2250DN FOR ARL/NZ	
1	LY3059001	1	CARTON, HL-2270DW FOR ARL/NZ	
1	LY2829001	1	CARTON, HL-2130 FOR ITA/IBR	
1	LY2848001	1	CARTON, HL-2240D FOR ITA/IBR	
1	LY2855001	1	CARTON, HL-2250DN FOR ITA/IBR	
1	LY3033001	1	CARTON, HL-2240D FOR PHL/SGP	
1	LY3063001	1	CARTON, HL-2270DW FOR PHL/SGP	
1	LY2799001	1	CARTON, HL-2240 FOR ARG	
1	LY2800001	1	CARTON, HL-2270DW FOR ARG	
1	LY2816001	1	CARTON, HL-2240 FOR CHL	
1	LY2822001	1	CARTON, HL-2270DW FOR CHL	
1	LY2815001	1	CARTON, HL-2240 FOR BRA	
1	LY2821001	1	CARTON, HL-2270DW FOR BRA	
1	LY2968001	1	CARTON, HL-2250DN FOR SGP	
1	LY3359001	1	CARTON, HL-2240D FOR KOR	
1	LY3361001	1	CARTON, HL-2250DN FOR KOR	
1	LY3242001	1	CARTON, HL-2130 FOR IND	
1	LY2862001	1	CARTON, HL-2240 FOR RUS	
1	LY2864001	1	CARTON, HL-2240D FOR RUS	
1	LY2866001	1	CARTON, HL-2250DN FOR RUS	
1	LY2827001	1	CARTON, HL-2130 FOR FRA/BEL/NLD	
1	LY2837001	1	CARTON, HL-2240 FOR FRA/BEL/NLD	
1	LY2845001	1	CARTON, HL-2240D FOR FRA/BEL/NLD	
1	LY2853001	1	CARTON, HL-2250DN FOR FRA/BEL/NLD	
1	LY3439001	1	CARTON, HL-2132 FOR PND	
1	LY2839001	1	CARTON, HL-2240 FOR IBR	
2	LY2444001	1	POLYSTYRENE PAD ASSY	
3	LY2447001	1	OPTION CARTON	
4	LY2688001	1	PE BAG 600X650	
5	LY0645001	1	SILICA GEL	
6	LY2501001	1	ELASTIC BAND	
7	LY2564001	1	PAPER STRIP	
8	LY3057001	1	PROTECTIVE MATERIAL	CHG

HL-2130/2132/2220/2230/2240/
2240D/2250DN/2270DW



15.PERIODICAL MAINTENANCE PARTS

REF No.	CODE	Q'TY	DESCRIPTION	REMARKS
1	LY3058001	1	PAPER FEEDING KIT	